



EWS Training Course

-Water Stewardship Concept-

*Brussels,
13th June 2013*



Background



Water issues in EU

Water Scarcity

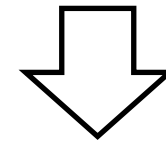
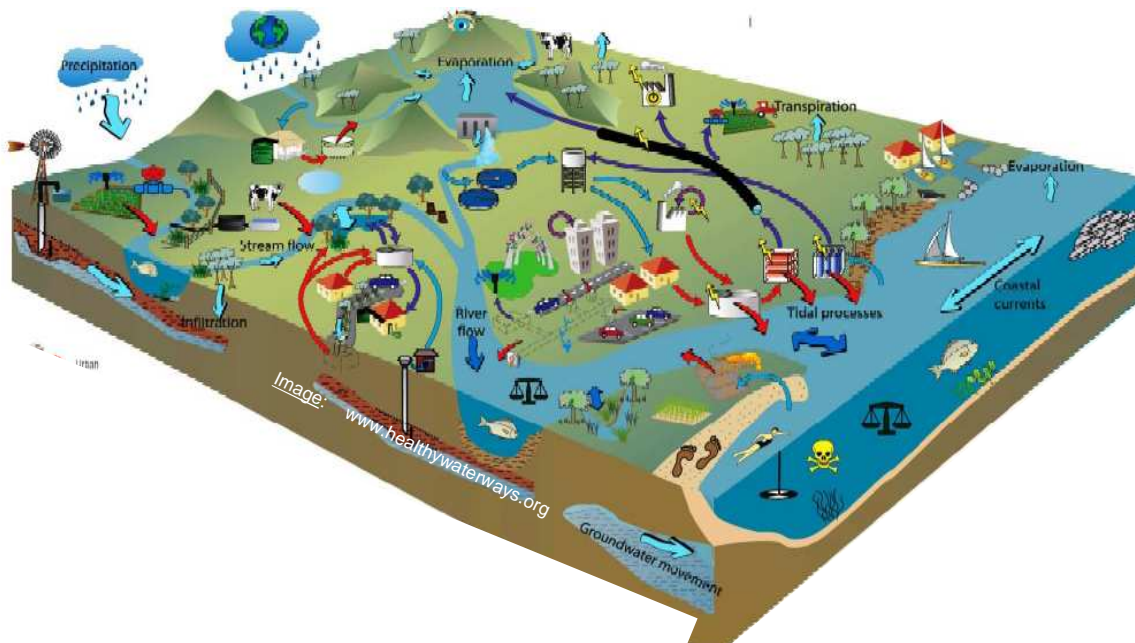
Marine intrusion
(Groundwater)

Joint over-abstraction

Point and diffuse pollution

Eutrophication

Morphological changes



Ecological impacts
(Biodiversity loss, etc.)

Social Impacts

**Need for integrated water management
HOLISTIC PERSPECTIVE**



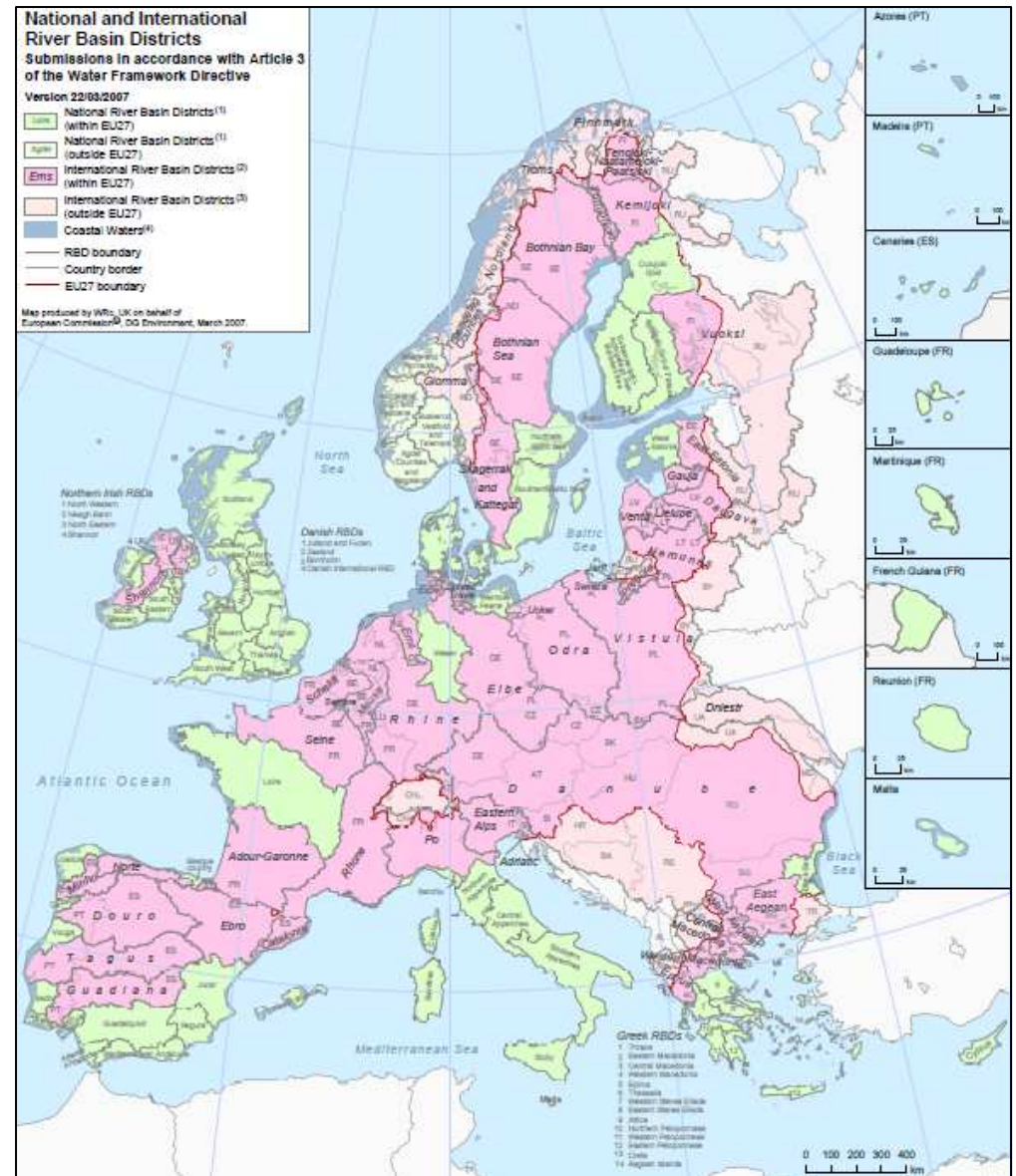
Water Framework Directive

WFD Main Objectives

Coordinate action to achieve good water status

Set up water management system based on River Basins

Active involvement of interested parties and public consultation





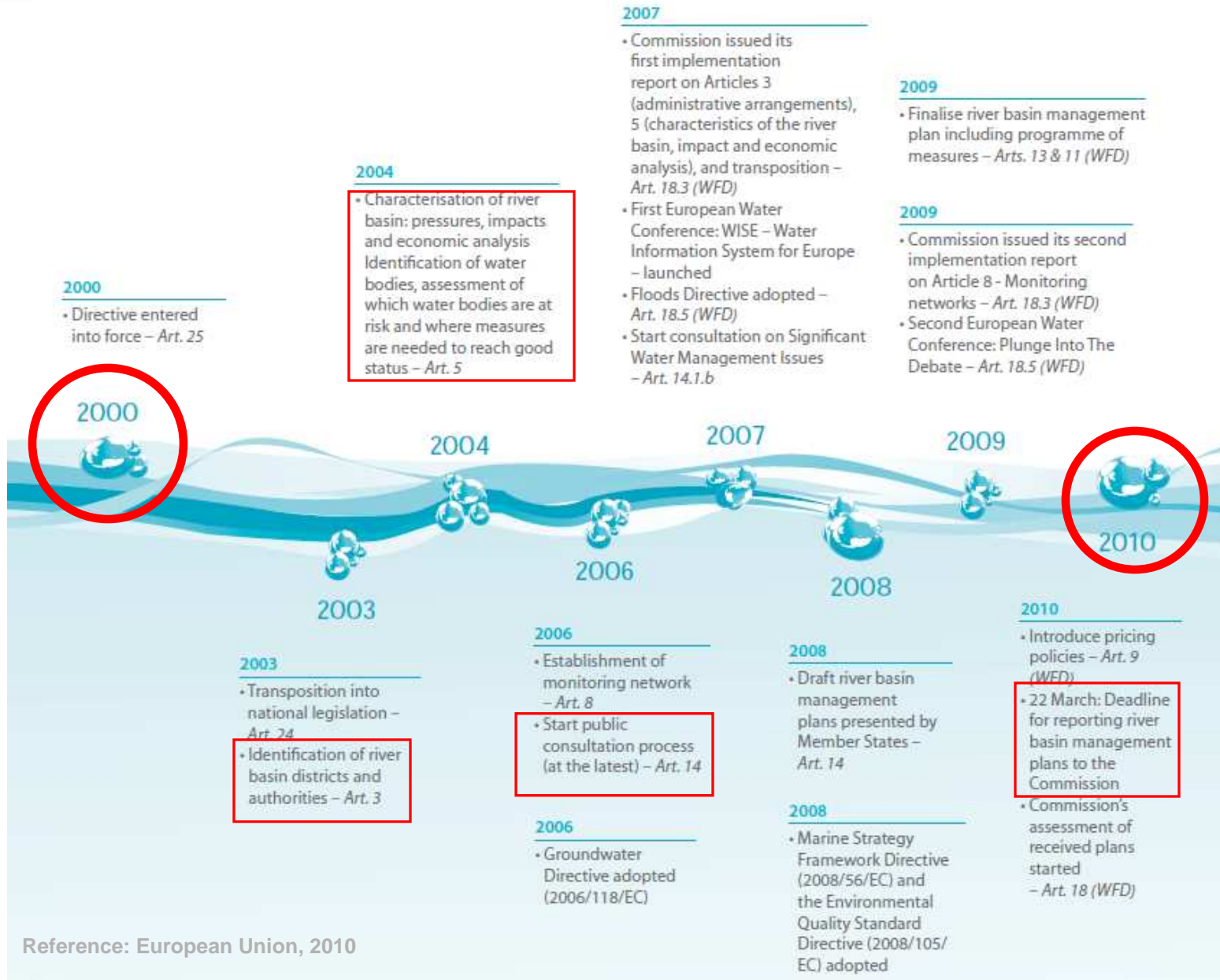
RB Plans as a tool

Basic content:

- ✓ Description of the basin (including maps)
- ✓ Summary of main pressures and environmental impacts of human activities
- ✓ Map of protected areas
- ✓ Map of monitoring networks and results
- ✓ List of environmental objectives
- ✓ Program of measures to improve/maintain water status
- ✓ Summary of public consultation and influence
- ✓ List of competent authorities and contacts



WFD implementation steps



Reference: European Union, 2010



WFD milestones

2012

- Make programmes of measures operational – *Art. 11 (WFD)*

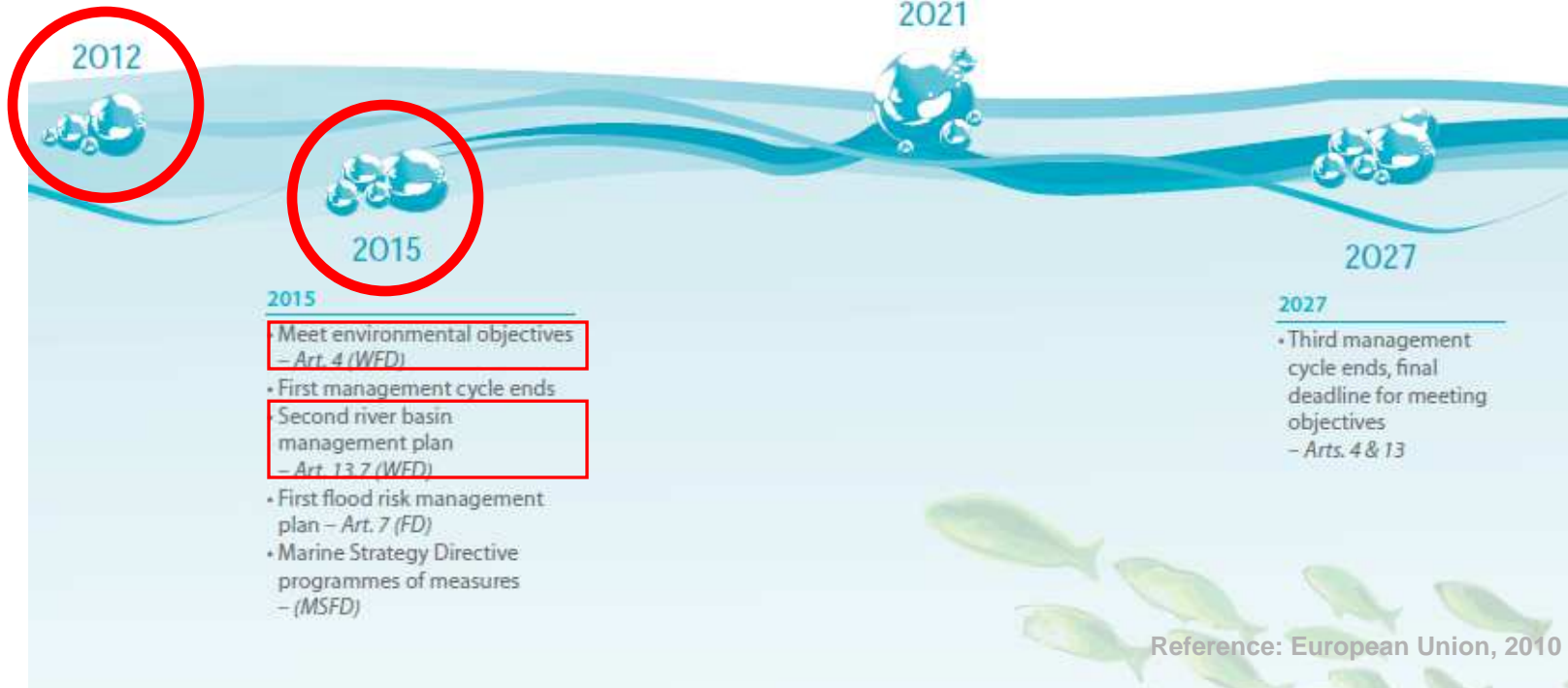
2012

- Third implementation report from the Commission on the WFD, policy review on water scarcity and droughts

and assessment of vulnerability of EU water in the Blueprint for Safeguarding Europe's water – *Art. 18.1 (WFD)*

2021

- Second management cycle ends
- Achievement of good environmental status under the Marine Strategy Directive – *Arts. 4 & 13*
- Third river basin management plans (*WFD*), second flood risk management plans (*FD*)





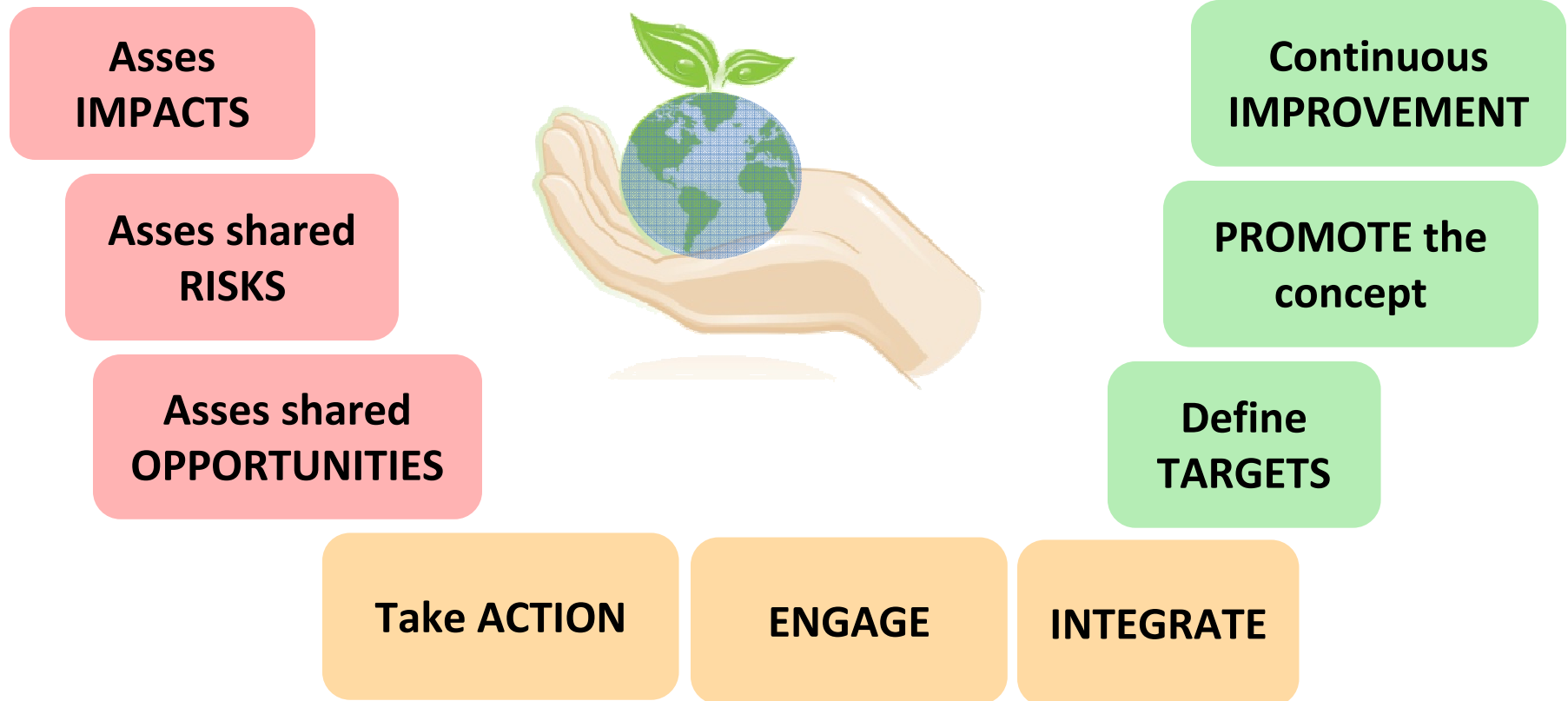
The concept



Water Stewardship Concept

Stewardship is about taking care of a common good or resource by responsible use and management

ASSESS – ACT – IMPROVE



**Asses
IMPACTS**

**Asses shared
RISKS**

**Asses shared
OPPORTUNITIES**

**Continuous
IMPROVEMENT**

**PROMOTE the
concept**

**Define
TARGETS**

Take ACTION

ENGAGE

INTEGRATE



Operational Risks

Physical

Decline/diruption in water supply.

Decline in water quality affecting process.

Reputational

Growing public awareness around ecological impacts of water withdrawal and discharge.

Perceived or concrete inequities in use resulting in local conflicts. Competition for clean water.

Regulatory

Increase in water prices.

Stricter water quality standards.

New water allocations.

Financial

Company seen as not addressing the potential risks.

Lack of investors



Water Stewardship definition

socially equitable *environmentally sustainable*
economically beneficial *stakeholder-inclusive process*
catchment-based actions
shared risk
collective actions



Water Stewardship definition

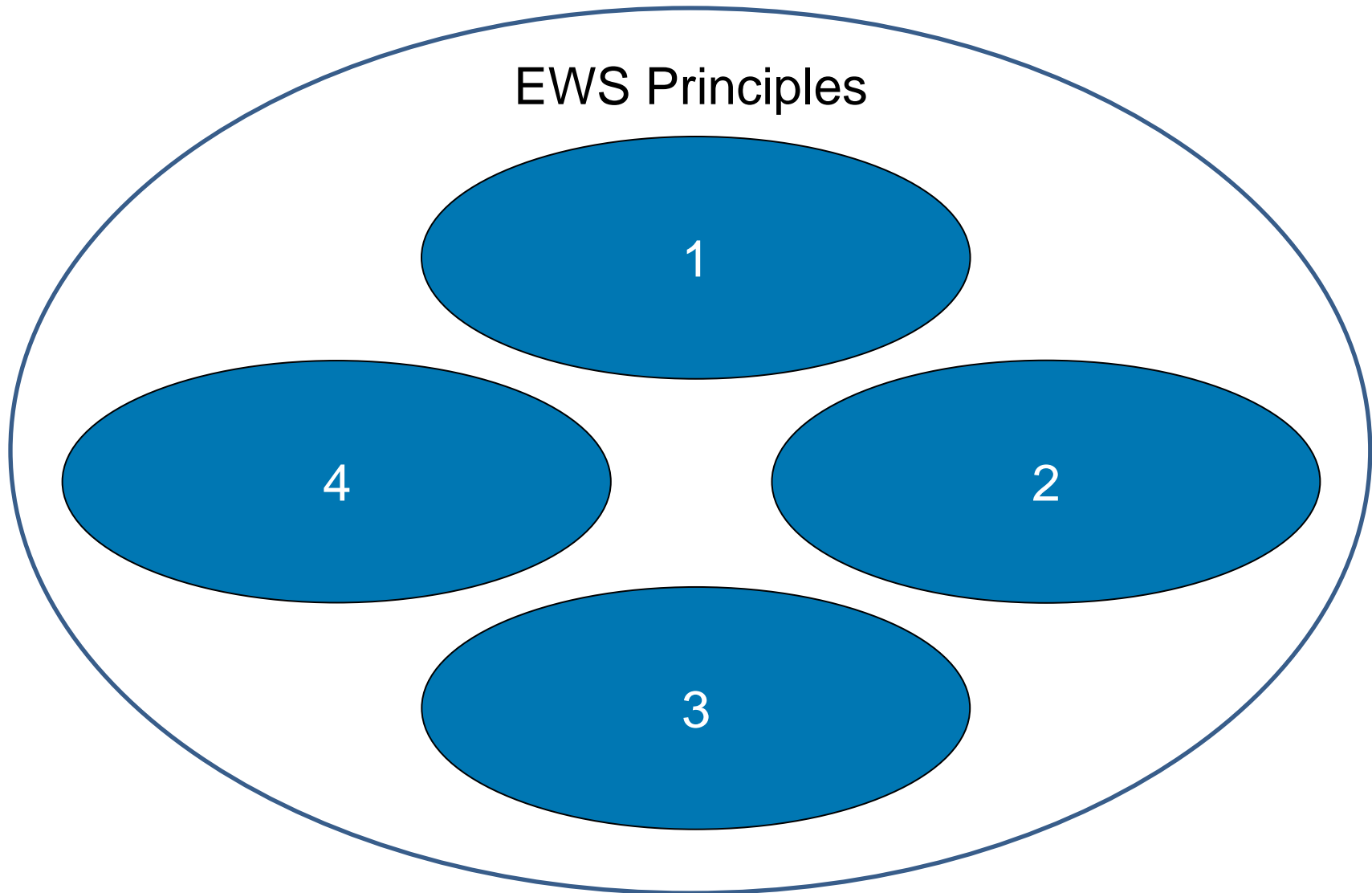
*“The use of water that is **socially equitable**, **environmentally sustainable** and **economically beneficial**, achieved through a **stakeholder-inclusive process** that involves site- and **catchment-based actions**. Good water stewards understand their own water use, catchment context and **shared risk** in terms of water governance, water balance, water quality and important water-related areas; and then engage in meaningful individual and **collective actions** that benefit people and nature.”*

Notes:

- Socially equitable water use recognizes and implements the human right to water and sanitation and helps to ensure human wellbeing and equity.*
- Environmentally sustainable water use maintains or improves biodiversity, ecological and hydrological processes at the catchment level.*
- Economically beneficial water use contributes to long-term sustainable economic growth, development and poverty alleviation.*

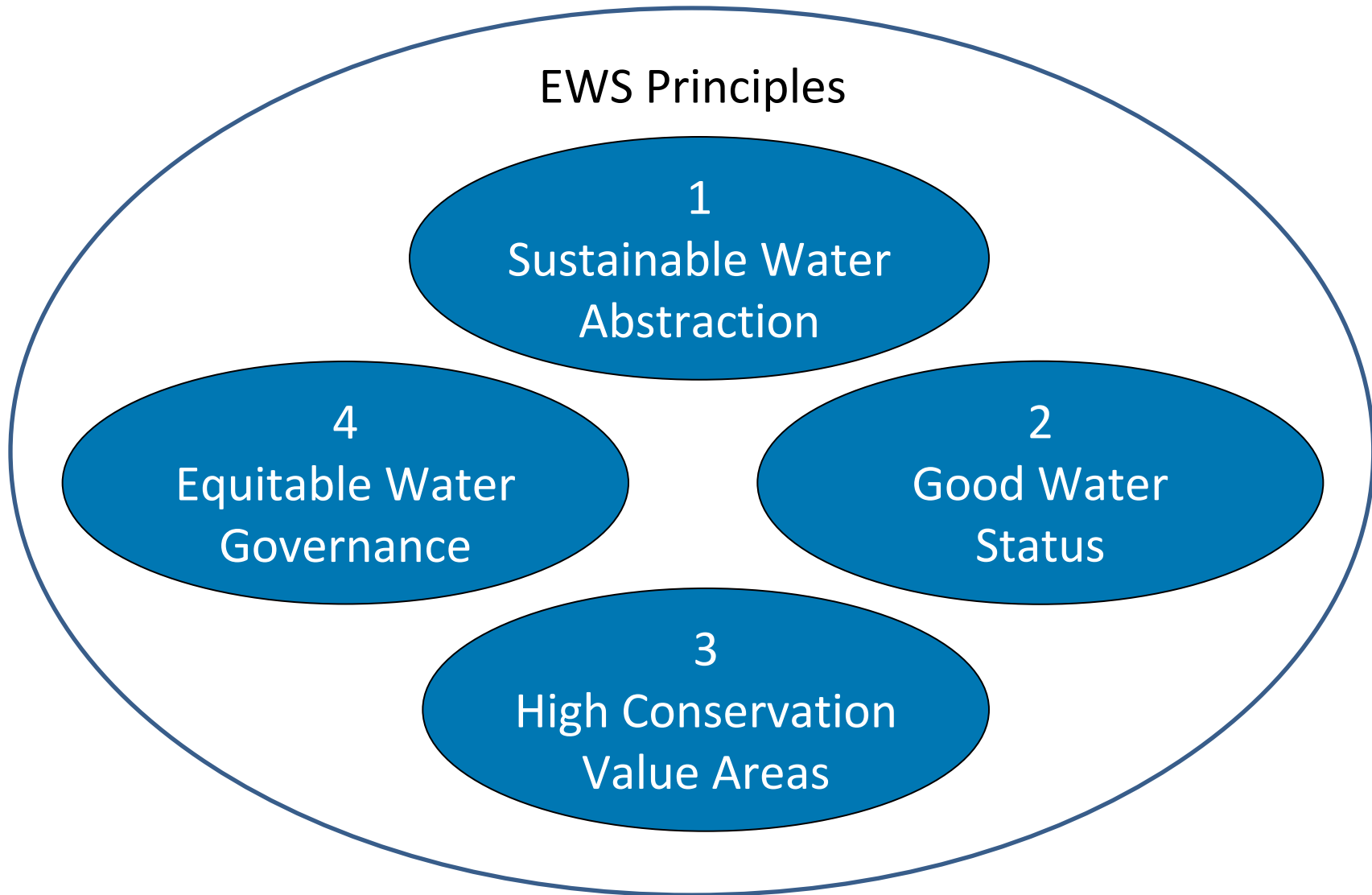


EWS standard





EWS standard





EWS Principles 1-3: rationale

Sustainable Water Abstraction

Get **information** on water sources

Assess **impacts** due to water abstraction

Take **actions** to mitigate impacts

Good Water Status

Get **information** on water quality

Assess **impacts** due to water discharge

Take **actions** to mitigate impacts

High Conservation Value (HCV) Areas

Get **information** on HCV areas

Assess **impacts** in those HCV areas

Take **actions** to mitigate impacts



EWS Principle 4: rationale

Equitable Water Governance

Engage with stakeholders

Integrate other resources

Ensure **transparency**

Integrate economy

Engage supply chain

**Water resources management strategy
at operational level**



EWS communication

[EWS Video](#)



